

TILE INSTALLED ON CEMENT MORTAR OVER MASONRY OR CONCRETE WALLS

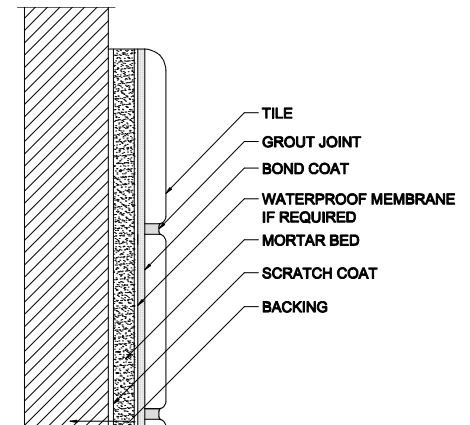
302W-2019-2021 INTERIOR/EXTERIOR

SUITABLE SUBSTRATES

- Concrete or masonry.

MATERIALS

- TILE – Interior and dry areas: All tile types as recommended by the manufacturer. Exterior: Frost resistant materials only.
- SCRATCH COAT (7 mm minimum) See Tile Guide Specification Section Mixes 2.9.2.1.
- MORTAR BED (20 mm+) See Tile Guide Specification Section Mixes 2.9.2.3.
- BOND COAT – Interior: Latex-Portland cement mortar (minimum acceptable standard ANSI A118.4 or ISO 13007 C2) epoxy mortar (minimum acceptable standard ANSI A118.3 or ISO 13007 R1), dry-set mortar (minimum acceptable standard ANSI A118.1 or ISO 13007 C1), organic adhesives (minimum acceptable standard ANSI A136.1 or ISO 13007 D1). Exterior: Single or two component liquid latex-Portland cement mortar (minimum specification required ANSI A118.4 or ISO 13007 C2S1).
- GROUT – Interior: Commercial Portland cement, Latex-Portland cement grout (minimum acceptable standard ANSI A118.6 or ISO 13007 CG1), epoxy (minimum acceptable standard ANSI A118.3 or ISO 13007 RG), or RTU grout. Exterior: Latex- Portland cement grout (minimum acceptable standard ANSI A118.6 or ISO 13007 CG1).



APPLICATION

- Apply scratch coat and allow to cure a minimum of 24 hours at 20°C. Apply mortar bed to required thickness in an even plane. Finished tolerance of mortar bed not to exceed 6 mm in 3000 mm or 2 mm in 300 mm. Allow up to 72 hours to cure. For large format tile where any side is greater than 380 mm surface variation should not exceed 3 mm in 3000 mm and 1,5 mm in 600 mm. Apply bond coat to mortar bed surface. Use proper notched trowel to ensure adequate bond. Place the tiles firmly into the wet bond coat. Push the tiles back and forth in a direction perpendicular to trowel lines, to collapse the mortar ridges and to help achieve maximum coverage. Ensure proper contact between mortar, tile and substrate by periodically lifting a few tiles to check for acceptable coverage. Use sufficient bond coat to ensure minimum 95% contact on exterior installations and wet areas (it may be necessary to back-butter the tile in order to meet this requirement) and minimum 80% on interior dry installations. Remove excess mortar from the joint areas so that at least 2/3 of the tile depth is available for grouting. Allow bond coat to cure. Force grout into the joints with a rubber grout float. Make sure all joints are well-compacted and free of voids and gaps. Remove excess grout from the tile surface and clean.

LIMITATIONS

- Manufacturer's recommendations to be followed. Exterior tile installations not to be attempted with a temperature of less than 12°C unless otherwise stated by manufacturer. Do not use paper-back mounted tile. Mesh-back mounted tile for exterior use or in locations of extreme moisture should not be used unless the manufacturer guarantees that the material is suitable for this type of installation.

OTHER CONSIDERATIONS

- Tile used on exterior applications to be frost resistant.
- It is recommended to back butter stone or agglomerated stone in wet indoor and exterior installations.
- Refer to Notes For the Professional and 301MJ-2019-2021.
- Waterproofing membrane if required must be specified. (ANSI A118.10) Follow manufacturer's recommendations.
- It is suggested to leave last 300 mm of vertical grout joints ungrouted at every 600 mm to allow moisture to escape at the bottom of the wall.
- Latex Portland cement mortars may require 14 – 60 days cure before exposure to water. Verify with the manufacturer the correct cure time required. Alternatively, to reduce the curing time required, a rapid set mortar may be more suitable.