

TILE INSTALLED IN STEAM ROOMS

321SR-2012-2014



Please refer to page 8.

DETAIL A – CONCRETE OR MASONRY CONSTRUCTION

SUITABLE SUBSTRATES

- Frame construction, masonry or concrete backing.

MATERIALS

- TILE
- MORTAR BED AND BOND COAT – Single or two component liquid latex-Portland cement mortar (minimum acceptable standard ANSI A 118.4 or ISO C2S1)
- GROUT – per manufacturer’s recommendations.

APPLICATION

- Tie wire spaced at 300 mm vertically and 406 mm to 600 mm horizontally. Attach to 6 mm steel pencil rods vertically over insulation; attach metal lath to pencil rods. Install scratch coat (see Tile Guide Specification Section Mixes 2.5.1), mortar bed (see Tile Guide Specification Section Mixes 2.5.3 and 2.5.5) and bond coat as per detail 307W-2012-2014 or 308W-2012-2014 (walls), Detail 310F-2012-2014 A (floors) and 315C-2012-2014 (ceilings)

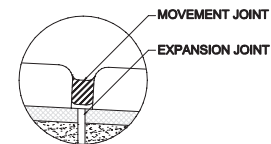
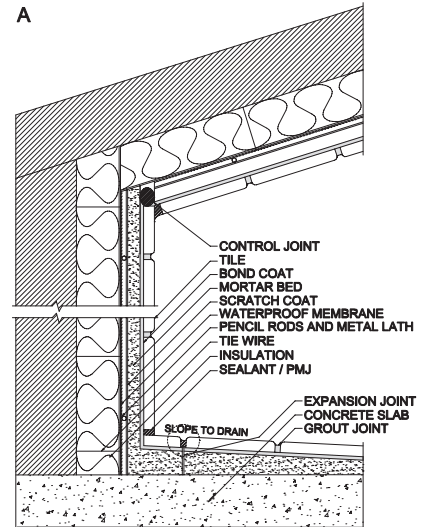
LIMITATIONS

- Waterproof membrane must be suitable for operating temperatures.

OTHER CONSIDERATIONS

- Detail 311F-2012-2014 may be used for floor installation provided that proper slope to drain is in the substrate.
- Drains should be designed to permit drainage of water at the tile surface and the surface of the waterproof membrane. A drainage layer may be incorporated over the waterproof membrane as recommended by the manufacturer. For drainage see Detail 326DR-2012-2014.
- Refer to Notes For The Professional and 301MJ-2012-2014.
- For high use showers and wet areas (hotels, gang showers, sports facilities etc.) a waterproof membrane shall be used.*
- All openings and cuts must be treated to ensure waterproof integrity.
- Refer to Detail 319B-2012-2014 for drainage detail.
- If waterproof membrane is not specified a slurry bond coat must be applied to concrete slab.
- Slope ceilings 150 mm per 1000 mm and floors 20 mm per 1000 mm.

* For continuous steamrooms if the waterproof membrane is acting as both the waterproofing membrane and the vapor retarder the waterproof membrane must have a perm rating of .5 or less using ASTM E-96 Procedure E with 90 % humidity. If the waterproof membrane has a perm rating higher then .5 then a vapor retarder should be used that has a perm rating 1.0 or less when tested with ASTM E-96 Procedure A



Continued

TILE INSTALLED IN STEAM ROOMS 321SR-2012-2014



Please refer to page 8.

DETAIL B – FRAME CONSTRUCTION

SUITABLE SUBSTRATES

- Wood or metal studs maximum 406 mm o.c.

MATERIALS

- 13 mm minimum thickness cementitious backer unit (CBU).
- MORTAR BED AND BOND COAT – Single or two component liquid latex-Portland cement mortar (minimum acceptable standard ANSI A 118.4 or ISO C2S1)
- GROUT – per manufacturer’s recommendations.
- VAPOUR RETARDER – per manufacturer’s recommendations.



APPLICATION

- If tile being installed directly: use Detail 305W-2012-2014 Detail A on walls; if tile is being set over a waterproof membrane follow manufacturer’s recommendations.

OTHER CONSIDERATIONS

- Detail 311F-2012-2014 may be used provided that proper slope to drain is in the substrate.
- Drains should be designed to permit drainage of water at the tile surface and the surface of the waterproof membrane. A drainage layer may be incorporated over the waterproof membrane as recommended by the manufacturer. For drainage see Detail 326DR-2012-2014.
- Refer to Notes For The Professional and 301MJ-2012-2014.
- For high use showers and wet areas (hotels, gang showers, sports facilities etc.) a waterproof membrane shall be used.*
- All openings and cuts must be treated to ensure waterproof integrity.
- Refer to Detail 319SR-2012-2014 Detail B for drain.
- Waterproof membrane if required must be specified. (ANSI A 118.10) Follow manufacturer’s recommendations.
- If waterproof membrane is not specified a slurry bond coat must be applied to concrete slab.
- If required, an insulation layer should be used made of rigid polystyrene. Consult with manufacturer.
- Slope ceilings 150 mm per 1000 mm and floors 20 mm per 1000 mm.



* For continuous steamrooms if the waterproof membrane is acting as both the waterproofing membrane and the vapor retarder the waterproof membrane must have a perm rating of .5 or less using ASTM E-96 Procedure E with 90 % humidity. If the waterproof membrane has a perm rating higher then .5 then a vapor retarder should be used that has a perm rating 1.0 or less when tested with ASTM E-96 Procedure A

B

